

Flute I

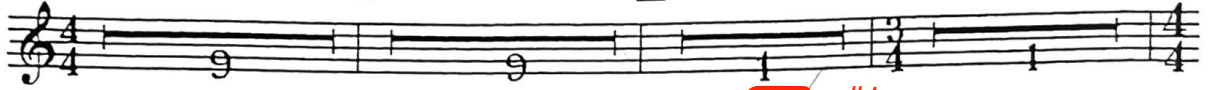
FIRST ESSAY FOR ORCHESTRA

Samuel Barber, op. 12

Andante sostenuto

1

2



3

#1

poco animando

f cresc.



4

sempre animato

Tpts.

ff

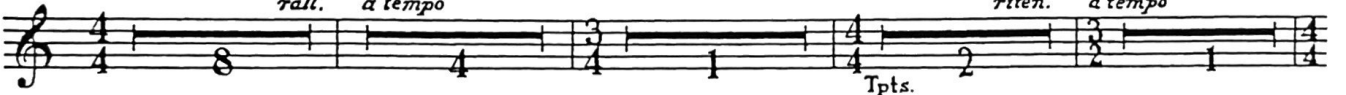


5

rall. a tempo

riten. a tempo

Tpts.



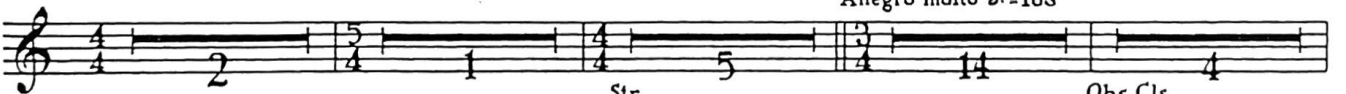
6

Allegro molto $\text{♩} = 108$

7

Str.

Obs. Cls.



pp

sfp



sfp

p



mp



Flute I

9 *poco cresc*

10 *sf* 5 2 *pp leggero*

11 *pp* 6 *p*

12 4 *p* 6 4

13 *p* *mf*

14 8 *mf*

15 2 8 *p*

16 2 12 *mf*

17 1

Detailed description: This page contains the musical score for Flute I, measures 9 through 17. The music is written on a single staff in treble clef. Measure 9 begins with a first finger trill (marked '1') and a *poco cresc* instruction. Measure 10 features a *sf* dynamic, a five-measure trill (marked '5'), a two-measure trill (marked '2'), and a *pp leggero* instruction. Measure 11 starts with a *pp* dynamic, a six-measure trill (marked '6'), and a *p* dynamic. Measure 12 is in a key signature of three flats (B-flat major) and features a four-measure trill (marked '4') with a *p* dynamic. Measure 13 continues in the same key signature with a six-measure trill (marked '6') and a four-measure trill (marked '4'). Measure 14 is in a key signature of four flats (E-flat major) and features an eight-measure trill (marked '8') with a *mf* dynamic. Measure 15 is in the same key signature and features a two-measure trill (marked '2') and an eight-measure trill (marked '8') with a *p* dynamic. Measure 16 is in a key signature of one flat (F major) and features a two-measure trill (marked '2') and a twelve-measure trill (marked '12') with a *mf* dynamic. Measure 17 concludes with a one-measure trill (marked '1').

Flute I

#2

p scherzando, cresc. poco a poco

18

f

cresc.

19

f *ff*

ff

20

21

allargando

rall. molto *Largamente sostenuto*

f cresc. *ff*

pp

rall. molto